

Trustix™ Trustix Enterprise Firewall – Quick Start User Guide

Part 1 – Installation

This guide will help you to install, license and set up the basic rules on your Trustix Firewall.

Checklist:

- PC-compatible computer for the firewall.
- Trustix Enterprise Firewall CD
- License certificate for the Enterprise Firewall
- IP address settings for your network:
 - Gateway IP address
 - Nameserver IP addresses
 - IP address settings for each network card (zone)
 - IP address of the administrator's machine
- Hostname (domain name) for the firewall.

Step 1

Place the Enterprise Firewall CD into the computer. Power the machine up. The installation process should automatically start.

[If the installation does not start, change the BIOS settings on the machine to boot from the CD-ROM drive.] You should see the following screen upon starting up:

```
Boot disk built: 20040121-02:03

Welcome to Comodo Trustix Firewall 4.0!

- To install or upgrade Comodo Trustix Firewall, press the <ENTER> key.

- To enable expert mode, type: expert <ENTER>.
  Press <F3> for more information about expert mode.

- To enable rescue mode, type: rescue <ENTER>.
  Press <F5> for more information about rescue mode.

- Use the function keys listed below for more information.

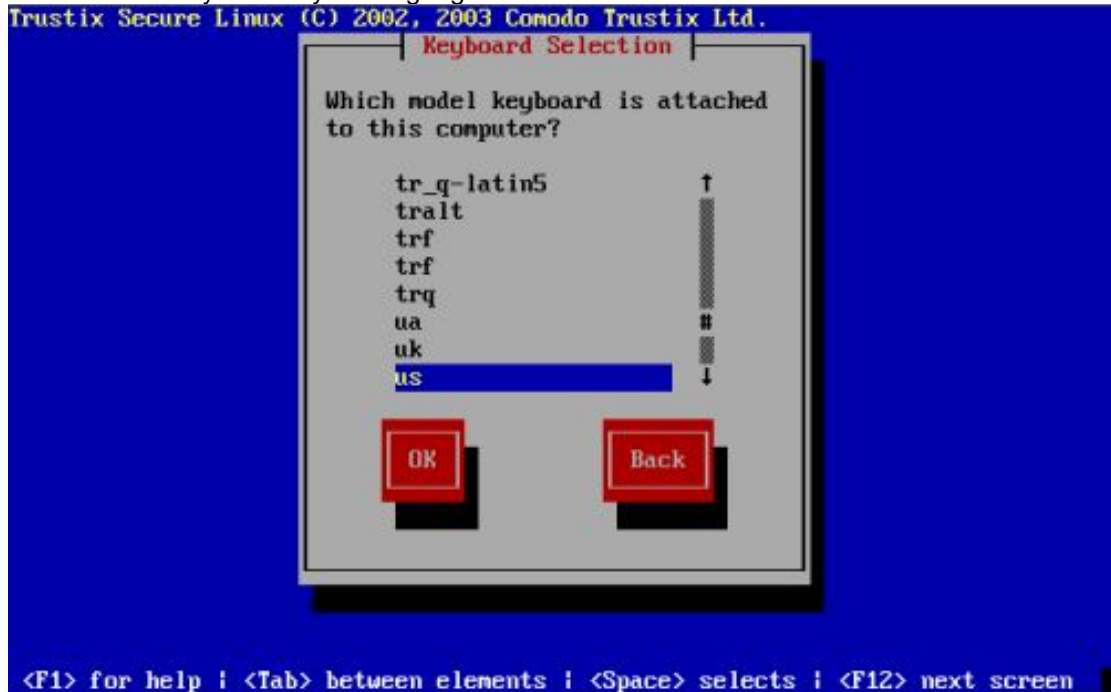
[F1-Main] [F2-General] [F3-Expert] [F4-Kernel] [F5-Rescue]
boot:
```

Press the <ENTER> key to begin the installation.



Step 2

Now choose the keyboard layout/language for the firewall.



Step 3

The next step is partitioning the hard-disc. You should just select the 'Autopartition' option under most circumstances.





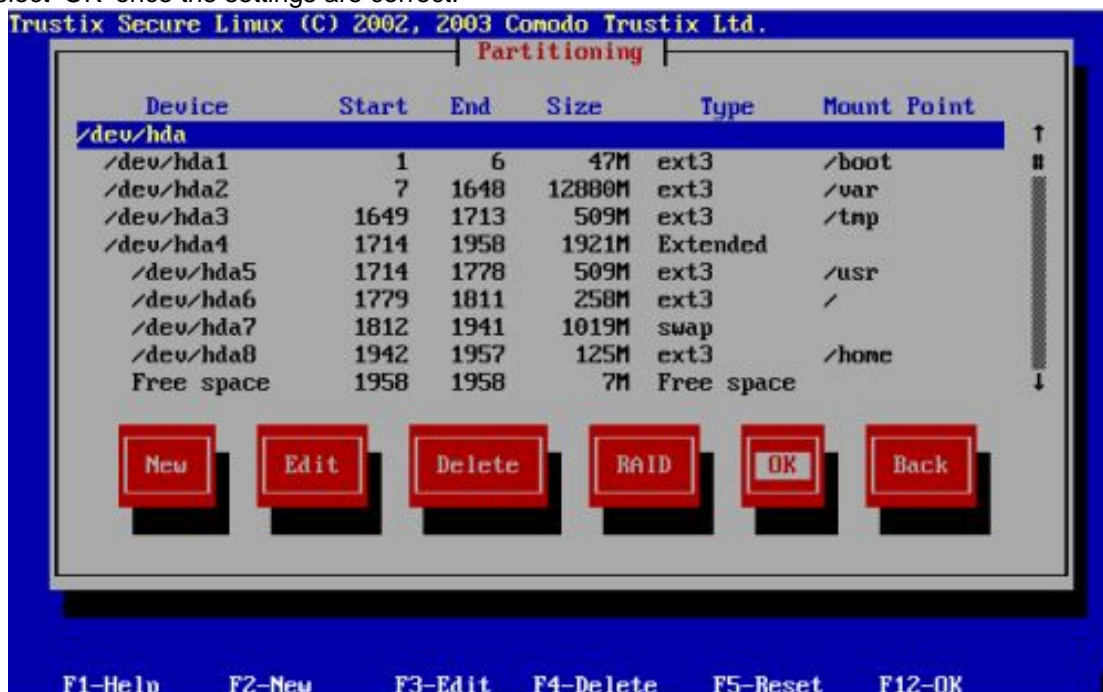
Step 4

The Autopartition option will then bring up the next window. Under usual circumstances, you will need to 'Remove all partitions on this system'. However, choose one of the other options should you require it. You will be asked to confirm the hard-disc partition details.



Step 5

The installer will then show you the resulting partition layout of the drive. Select 'OK' once the settings are correct.





Step 6

The installer will then ask for the network settings for each network card you have on the system. (You should have one network card for each zone on the firewall). You can either choose DHCP/BOOTP for automatically fetching the settings, or specify the IP address and Subnet Mask. [Repeat as necessary for each network card.]



Step 7

Now you will need to enter the default gateway and nameserver settings. You will need to enter the IP address of at least 1 nameserver, though not all 3 are required.

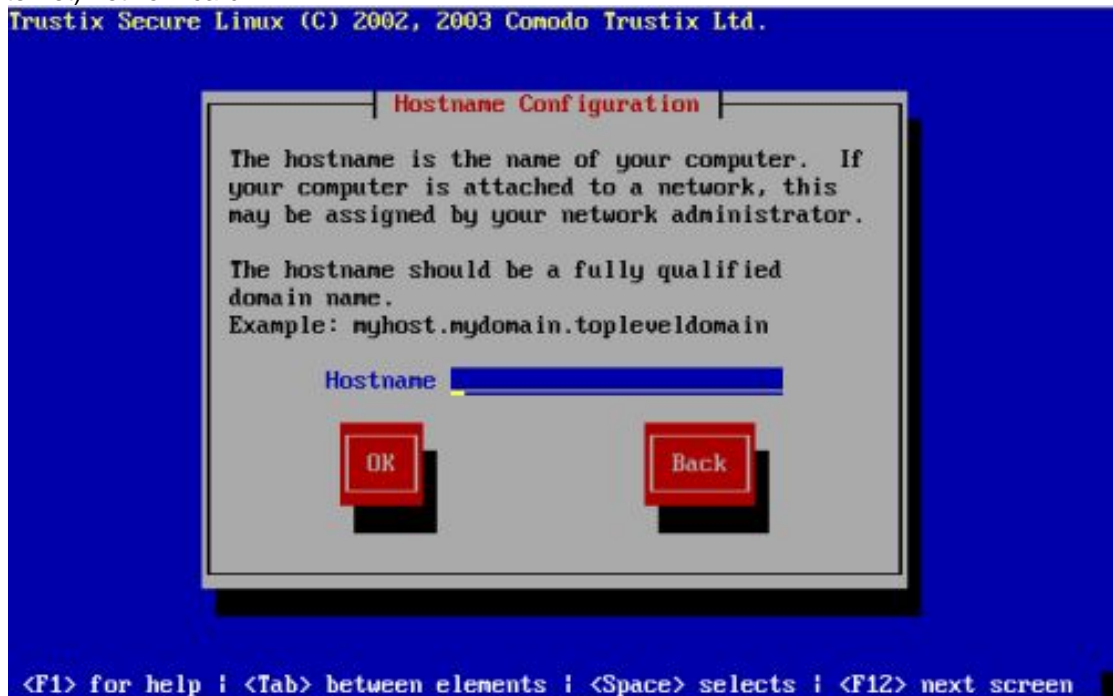




Step 8

Now you need to enter the hostname for the firewall.

If you have no hostname set up for the firewall, you can simply enter the IP address of the external (internet) network card.



Step 9

Choose the time zone the server is located in.





Step 10

Finally, you need to specify the IP address of the machine you will first use to administer the firewall remotely from.



The firewall will now begin to format and partition the hard disc, and install the software. This will take from 10-20 minutes, depending on the speed of the hardware. Once completed, you should press enter at the confirmation screen, and the system will eject the CD and reboot the machine into the firewall interface.

Step 11

This final installation stage requires you to configure some simple settings on the firewall itself. Once this is completed, you can then remotely configure the firewall from a remote computer.

The firewall will require a password to access the interface. The default password is 'trustix'. This can be changed later via the interface. [See the full User Guide for details on changing this].

Within the interface, choose the 'Configure Networks' option

- For each network card, you will need to name the Zone. Choose the network card, press enter, move down to the 'Zone' setting, and enter a name [e.g. LAN, Internet, DMZ etc.]

Once you have completed Configuring the networks, choose the 'Set Default Gateway'.

- The default gateway will already be entered. You need to choose with network interface that the gateway is accessible from.

Finally, you need to choose the menu item 'Set LAN Interface'.

- Select the network interface that the LAN is connected to.

The firewall is now set up and ready to licensed.



Part 2 - Licensing

Checklist:

- Comodo-Trustix Firewall, installed and configured as per Part 1 of this guide.

Step 1

Locate the machine with the IP address that you specified in Step 10 of Part 1 of this guide. Insert the Firewall CD into the CD-ROM drive, and (under Windows) the Firewall X Sentry Client should begin the installation automatically. Once installed, launch the Client program.

Step 2

The Client should then prompt you with a login box as below:



Enter the IP address of the Firewall, and the default username is: **admin**

The default password is: **trustix**

The client will then login to the Firewall. (Please note that you should change this username and password as detailed in the full user guide)



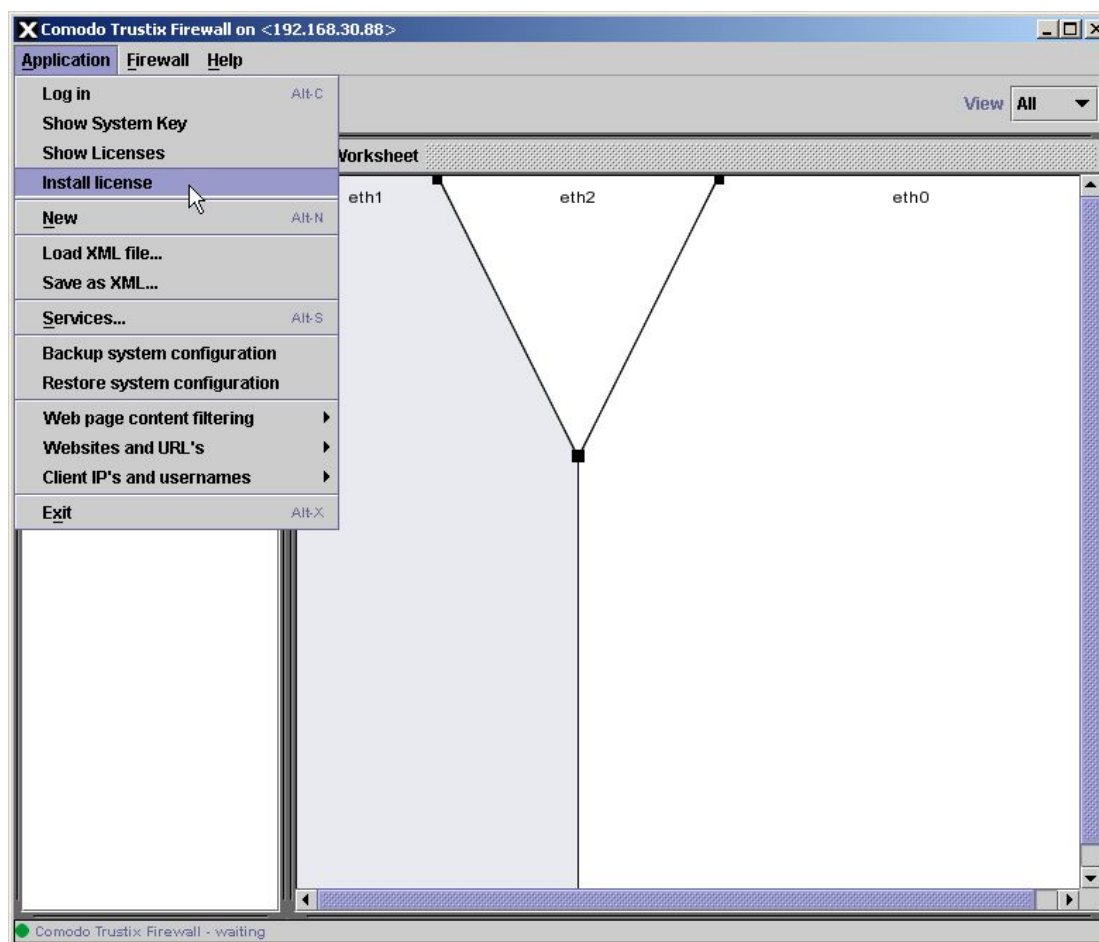
Step 3

The Firewall will then inform you that there are no correct licenses on the Firewall. Click OK when the window pops up.

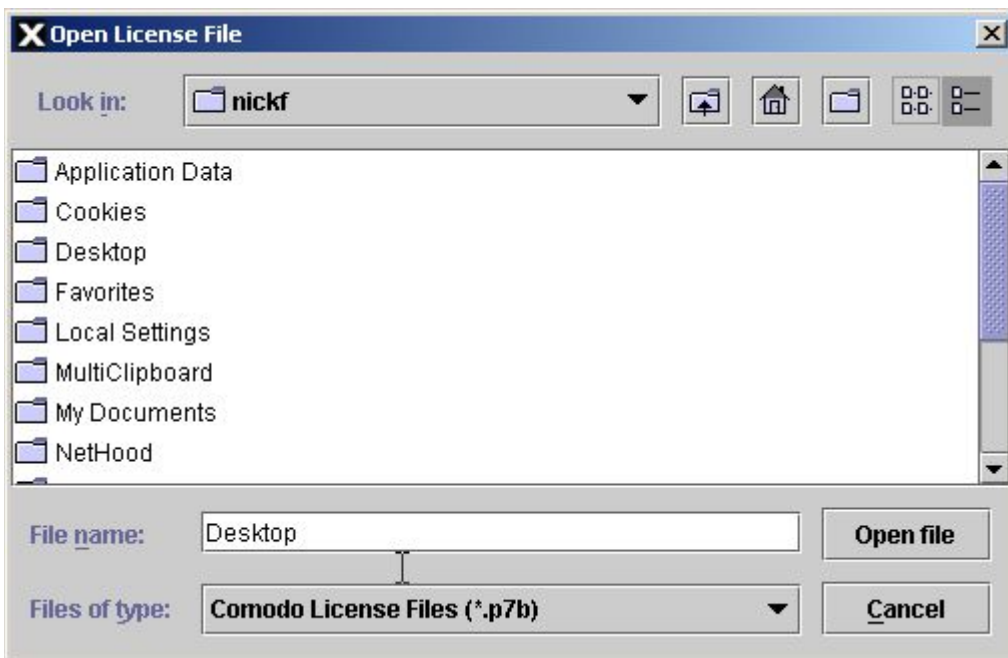
The Firewall will then show you a box containing the 'System Key'. Click OK to close this window also.

Save the license file you have received via email to your computers hard-drive.

Go to the 'Application' menu, and choose the option 'Install License'.



In the window that appears, change the 'File Type' to 'Comodo License Files (*.p7b)'



Locate the license file on your computer.
Click 'Open'.

The license file should then install, and the Enterprise Firewall is ready to use.

Trustix™

New Court, Regents Place, Regents Road, Manchester, Salford, M5 4HB,
United Kingdom Tel Sales: +44 (0) 161 874 7080
Fax Sales: +44 (0) 161 877 1767

www.trustix.com

© 1998-2004 Comodo. Trustix™, XPLOY™, SWUP™, and the Trustix Logo are trademarks of Comodo Trustix Limited. SIDEN™, SEEOS™, EnterpriseSSL™, InstantSSL™, TrustLogo™, VerificationEngine™, UserAnywhere™ are trademarks of Comodo. All other trademarks and registered trademarks are the property of their respective owners.

Information in this document is subject to change without notice.
Part Number 2004.QUICK START USER GUIDE - ENTERPRISE FIREWALL.001